



Gateway Center for Giving

2020 Annual Report



Letter From Our Leadership

Members and Friends of the Gateway Center,

In a year unlike any other, 2020 found us at the convergence of a health pandemic, a weakened economy, and a powerful social justice movement, all deserving thoughtful responses from the philanthropic sector. During this time of great uncertainty, the Gateway Center for Giving remained uniquely situated to provide a voice and venue for collaboration and action.

Fortunately, our investment in significant technology upgrades last year (as well as a flexible GCG team) allowed us to quickly pivot our program and service delivery to a virtual format. We're proud of the way that GCG has been able to maintain momentum, and are grateful to see how our Members have engaged.

Staying agile, GCG marked another productive year, with 31 informative programs, including a dozen Member convenings to highlight funder responses to COVID-19 and calls for racial justice. GCG staff delivered more than 100 hours of member-requested research, produced two original publications, and maintained a steady flow of information to our stakeholders on acute community issues. We helped our Members to build sector relationships, fostered knowledge sharing, and elevated best practices. We also launched a year-long strategic planning process, re-articulated and enhanced our mission and vision, and are poised for a promising future, with statewide aspirations.

Thank you for the opportunity to work with you to create sustainable change.



Sincerely,

A handwritten signature in black ink, appearing to read "Jenny Hoelzer", written over a light blue horizontal line.

Jenny Hoelzer
Board Chair

Who We Are

Gateway Center for Giving (GCG) helps donors do more.

We strengthen philanthropy and promote community impact by providing programming, research, and networking opportunities to grantmaking organizations throughout Missouri.

We enhance regional leadership through information on community needs and philanthropic best practices, supporting collaborative action to help address our region’s most pressing issues.

Our Members include corporations, donor-advised funds, foundations, trusts, and professional advisors actively involved in philanthropy.

Staff



Deborah Dubin
CEO & President



Kelly Connor
Program &
Communications
Manager



Heather Jaconis
Center Manager

2020 Board of Directors

Chair

Jenny Hoelzer
Commerce Bank

Vice Chair

Gregory Glore
Glore Fund

Secretary

Vander Corliss
United Way of
Greater St. Louis

Treasurer

Angela Brown
St. Louis Regional
Health Commission

Barbara Carswell
YouthBridge Community
Foundation

Jane Callahan
JF Roblee Foundation

Julie Hardin
Cigna

Wendell Kimbrough
ARCHS

Emily Koenig
St. Louis County
Children’s Service Fund

Deena Lauver Scotti
Missouri Foundation
For Health

Al Mitchell
Bayer

D-Lori Newsome-Pitts
Ameren

Beth Radtke
Baptist-Trinity
Lutheran Legacy
Foundation

Rich Ryffel
First Bank

Julio Suárez
Anheuser-Busch

Committee Members

Throughout 2020, Gateway Center for Giving's work was guided by volunteer committees. We gratefully acknowledge the important role these committees played in helping GCG achieve its mission.

Executive Committee

Jenny Hoelzer, Commerce Bank
Gregory Glore, Glore Fund

Vander Corliss, United Way of Greater St. Louis
Angela Brown, St. Louis Regional Health Commission

Audit Committee

Vianey Beltran, Wells Fargo Advisors
Barbara Carswell, YouthBridge Community Foundation

Julio Suárez, Anheuser-Busch

Engagement Committee

Sarah Bowman, PNC Bank
Gregory Glore, Glore Fund
Stacy Harris, Delta Dental of Missouri

Wendy Jaffe, Trio Foundation of St. Louis
Wendell Kimbrough, ARCHS
Beth Radtke, Baptist-Trinity Lutheran Legacy Foundation

Finance Committee

Angela Brown, St. Louis Regional Health Commission
Stacy Clay, First Bank
Emily Koenig, St. Louis County Children's Service Fund

Rich Ryffel, First Bank
Ryan Strode, Franciscan Sisters of Mary

Governance Committee

Sandy Becker, Maritz
Amy Best, Bank of America
Steve Brawley, ARCHS

Emily Fuhrman, Build-a-Bear
Julie Hardin, Cigna
Deena Lauver Scotti, Missouri Foundation for Health

Programs & Services Committee

Ed Bryant, United Way of Greater St. Louis
Jane Callahan, JF Roblee Foundation
Abby Goldstein, Goldstein Family Foundation

Rebekah Miller, Lutheran Foundation of St. Louis
D-Lori Newsome-Pitts, Ameren
Heidi Veron, The Saigh Foundation

Member Organizations

Grantmaking Members

Ameren Missouri	Emerson	Pettus Foundation
Anheuser-Busch	Enterprise Holdings Inc.	The Pillsbury Foundation
ARCHS	Estelle W. and Karen S. Kalish Fund	PNC Bank
Bank of America	Ewing Marion Kauffman Foundation	The Regional Business Council
Bayer	First Bank	Regions Bank
BKD Foundation	Forrester Family Fund	Reinsurance Group of America
The Boeing Company	Franciscan Sisters of Mary	RubinBrown
Boniface Foundation	Glore Fund	The Saigh Foundation
Brown Sisters Foundation	Goldstein Family Foundation	Saint Louis MHB
Build-A-Bear Workshop	The Henry A. Jubel Foundation	St. Louis City Senior Fund
Caola Kullman Family Fund	J&MK Fort Family Foundation	St. Louis Community Foundation
Cardinals Care	Jewish Federation of St. Louis	St. Louis County Children’s Service Fund
The Centene Charitable Foundation	JF Roblee Foundation	Spire
Cigna	JPMorgan Chase & Co.	Trio Foundation of St. Louis
Clemence Lieber Foundation	Light a Single Candle Foundation	Robert J. Trulaske, Jr. Family Foundation
Commerce Bank	Lutheran Foundation of St. Louis	United Way of Greater St. Louis
Crawford Taylor Foundation	Marillac Mission Fund	Wells Fargo Advisors
The Dana Brown Charitable Trust	Missouri Foundation for Health	YouthBridge Community Foundation
Delta Dental of Missouri	MiTek	Anonymous Foundation
Edward Jones	Norman J. Stupp Foundation	

Associate & Regional Partner Members

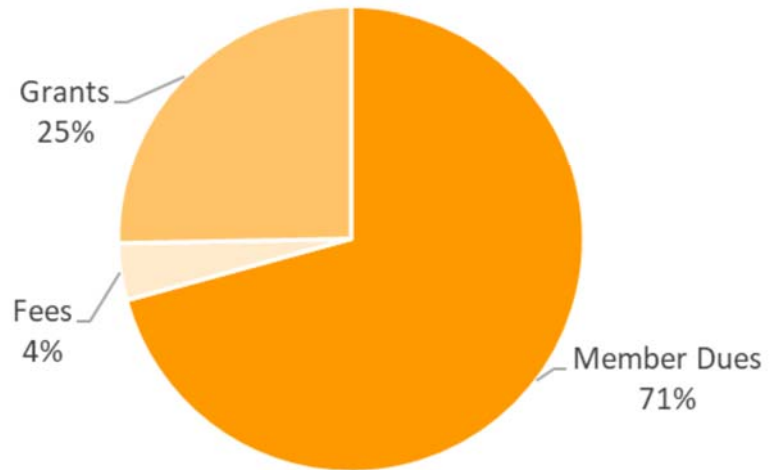
Holmes, Radford, & Reynolds	McMurtrey Financial Group	St. Louis Regional Health Commission
IFF	Mercy Investment Services	Vario
Insperity	The Rome Group	

2019 Audited Financials

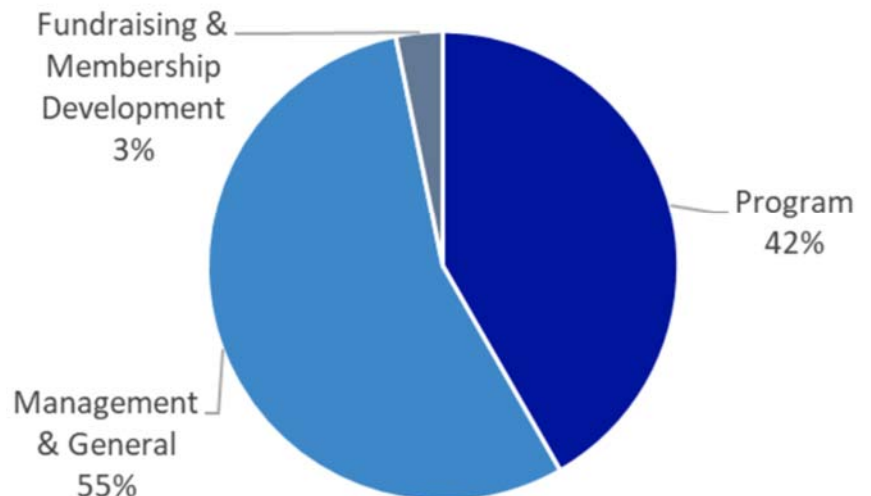
The Gateway Center for Giving conducts an annual audit of our financial statements. The most recently completed audit, for fiscal year 2019, shows revenue of \$319,839 and expenses of \$341,961.

GCG continues to maintain a healthy reserve account, which is used to reinvest in the organization, including upgrading technology and supporting long-range planning needs, as authorized by the Board of Directors.

2019 Revenue



2019 Expenses



2020 Grants and In-Kind Support

We thank the following organizations for providing grants and in-kind support for 2020 programs and services:

Alliance for Justice	Vu Le, Nonprofit AF
AFP St. Louis	Lutheran Foundation of St. Louis
Ameren Missouri	Marillac Mission Fund
Bank of America	Missouri Budget Project
The Bellwether Foundation	Missouri Foundation for Health
Beyond Coal/Sierra Club	The Morse Group
BKD	National Center for Family Philanthropy
Boniface Foundation	Network for Strong Communities
Center for Civic Research & Innovation	Pettus Foundation
The Charity CFO	The Pillsbury Foundation
Cigna	PNC Bank
Clark Fox Family Foundation	Regional Arts Commission
Clemence Lieber Foundation	Regional Business Council
Commerce Bank	The Rome Group
Community Foundation of the Ozarks	The Saigh Foundation
COVID-19 Regional Response Team	Saint Louis MHB
Deaconess Foundation	STEMSTL
Delta Dental of Missouri	St. Louis Community Foundation
Emerson	St. Louis County Children's Service Fund
Enterprise Holdings Inc.	St. Louis Metropolitan Pandemic Task Force
EPIP St. Louis	St. Louis Public Schools Foundation
First Steps to Equity Collaborative	St. Louis Violence Prevention Commission
Forefront	Trio Foundation of St. Louis
Forrester Family Fund	Robert J. Trulaske, Jr. Family Foundation
J&MK Fort Family Foundation	The Trust-Based Philanthropy Project
Forward Through Ferguson	UMSL Community Innovation and Action Center
Franciscan Sisters of Mary	United Philanthropy Forum
Funders Learning & Evaluation Group	United Way of Greater St. Louis
Gladiator Consulting	Wells Fargo Advisors
Glore Fund	YouthBridge Community Foundation
Greater St. Louis, Inc.	YNPN St. Louis
Institute for Public Health, Washington University in St. Louis	

What We Do

Gateway Center for Giving hosts a variety of content-based programs for grantmakers to enhance their knowledge through in-person learning, discussion, and connection. This year, due to the COVID-19 pandemic, GCG pivoted to online webinars and virtual program offerings. Below are some of the key programming highlights of our year.

Grantmaker Skills & Strategies

Grantmaking Relationships: Elevating Grantee Voice, featuring the St. Louis Funders Learning and Evaluation Group (FLEG) Grantee Voice Committee

*Sponsored by Lutheran Foundation of St. Louis
Hosted by Marillac Mission Fund*

Funder Briefing: United Way Community Needs Assessment

In partnership with the United Way of Greater St. Louis

Trust-Based Philanthropy 101

Supported by the Trust-Based Philanthropy Project

Mission Sustainability Initiative

In partnership with Forefront

Rapid Response Grantmaking

Organized by FLEG's Capacity Building Committee

Nonprofit Financial Health: Stress Test and Key Indicators, featuring Tosha Anderson of The Charity CFO

Networking Programs

Lunch with Leaders

Small group conversations led by:

Sarah Kramer, Ameren

Desiree S. Coleman, Wells Fargo Advisors

Sarah Bowman, PNC

Series sponsored by Ameren Missouri

Philanthropy After Hours

Cross-Sector Conversations, featuring panelists Andrew Jorgensen, Opera Theatre of St. Louis; Erica Henderson, St. Louis Promise Zone; Rhonda Gray, Insperity

Sponsored by Bank of America



Public Policy & Advocacy

2020 Federal Budget: What's at stake for Missouri?, featuring Amy Blouin of the Missouri Budget Project

In partnership with Economic Opportunity Funders

Investing in Change: Foundation Support for Lobbying and Other Advocacy, training facilitated by Alliance for Justice

Sponsored by Missouri Foundation for Health

Community Events

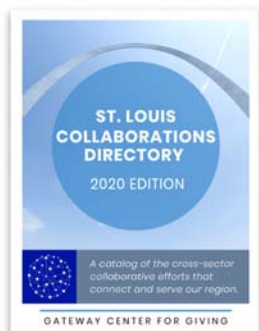
Annual Meeting at the Clark Fox Forum @ Hillman Hall, featuring remarks by philanthropic futurist Trista Harris

Sponsored by Cigna, Commerce Bank, Emerson & Enterprise Holdings Foundation

Meet the Donor: Program for Nonprofits, featuring Delta Dental of Missouri, Lutheran Foundation of St. Louis, and The Saigh Foundation

Sponsored by Wells Fargo Advisors

Publications



Affinity Groups & Peer Communities

Early Childhood

Early Childhood Education Update for Funders, featuring the First Step to Equity Collaborative and STL Pre-K Cooperative

Sponsored by PNC Bank

Diversity Equity & Inclusion

Environmental Health and the COVID-19 Pandemic, featuring Dr. Alexander Garza and Leah Clyburn

Sponsored by the Trio Foundation of St. Louis and Wells Fargo Advisors

Family Foundation & Donor-Advised Funds

Family Foundation Roundtable, conversation with Nick Tedesco, President & CEO, National Center for Family Philanthropy

Sponsored by the J&MK Fort Family Foundation

Information & Services

Created a **COVID-19 Sector Resource Hub & Philanthropic Response in Missouri** Working Document

Provided 100+ hours of **customized research** for Members

Produced biweekly **What Gives?** Member newsletters with curated articles, resources, and events

Provided **operations support** for the St. Louis Funders Learning and Evaluation Group (FLEG)

Participated in **Crossroads Critical Cultural Competency Workshop** with GCG Board Members and Committee Chairs

Topical Programming

Member Calls: Philanthropic Responses to COVID-19 and Racial Injustice

- STL Community Foundation COVID-19 Regional Response Fund; United Way COVID-19 Response & Resources
- COVID-19 Business Impacts & Response with the Regional Business Council; CARES Act Overview with BKD; Pooled Funding Update
- Nonprofit Impact Survey Results with Network for Strong Communities
- COVID-19 Regional Response Team Briefing
- COVID-19 Equitable Relief & Recovery Fund Overview; Immigrant Family Emergency Response Fund; United to Help Our Neighbors Program Update; COVID-19 Regional Response Funds & Give STL Day Updates
- Changes to Grantmaking Practices Discussion
- St. Louis Regional Racial Healing Fund with Deaconess Foundation and Missouri Foundation for Health
- Social Service Sector - PPE Assessment; Education's Critical Needs; Medicaid Expansion Measure
- COVID-19 & the Arts with the Regional Arts Commission
- Bridging the Digital Divide; Digital Equity

2020 Wrap Up Session - Greater St. Louis, Inc.; Second Round COVID-19 Responsive Funding; Breakout Room Conversations

Gun Violence: Addressing an Epidemic, featuring speakers from the Institute for Public Health at Washington University in St. Louis, St. Louis Area Violence Prevention Commission, Missouri Foundation for Health, and Saint Louis MHB

Building Pathways to Address Substance Use Disorder

Philanthropy's Response to the Substance Use Disorder Crisis (June)

Cross-Sector Approaches to Addressing Substance Use Disorder (November)

Webinar series co-sponsored by a coalition of Philanthropy Serving Organizations, including Philanthropy West Virginia, Philanthropy Ohio, Indiana Philanthropy Alliance, Gateway Center for Giving, and Council of Michigan Foundations.



Look

BACKWARD.

GCG was founded as the Metropolitan Association of Philanthropy in 1970.

In a salute to our past, we reconnected with former staff members to reflect on the organization's robust history. We learned that our alumni continue to generate sector impact across the country.

We are grateful for all of the talented people who have contributed to this organization's five decades of service.

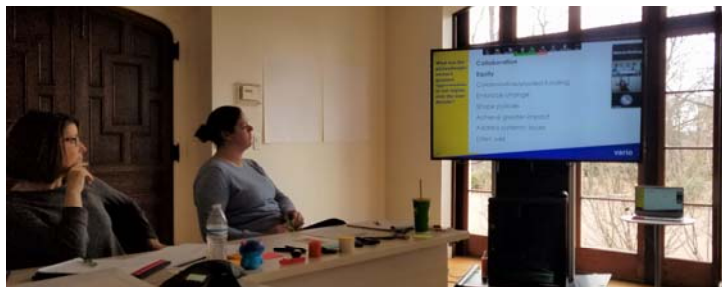


INWARD.

As we approached our Fiftieth Anniversary in 2020, we recognized the need to examine and re-affirm our organizational purpose and scope.

We undertook a year-long strategic planning process, including focus groups with grantmakers across the state. As a result of what we heard, we're rebranding to reflect geographic expansion, centering equity in our work, and scaling up with enhanced programming and agile leadership on key issues affecting the philanthropic sector statewide.

This growth promises to deliver opportunities for greater connectivity across all areas of the state, strengthening the power of philanthropy in Missouri.



Special thank you to those who participated in this process:

Strategic Planning Committee

Angela Brown, St. Louis Regional Health Commission
Barbara Carswell, YouthBridge Community Foundation
Jenny Hoelzer, Commerce Bank
Sarah Morrow, Missouri Foundation for Health
Dan Watt, The Dana Brown Charitable Trust

FORWARD.

Gateway Center for Giving is thrilled to announce a new name and strategic transition to **Philanthropy Missouri**. The new designation signifies plans to connect grantmakers across the state in order to strengthen and amplify philanthropic best practices in Missouri.

As we build on our 50-year history, we have an opportunity to create an even more robust organization, offering expanded opportunities and deeper value for members, and bringing funders together across the state to engage in learning and collaboration.

This expansion in scope means an opportunity for greater impact and leadership on key issues affecting the philanthropic sector statewide, and includes a strong commitment to embedding equity in our work.

Our revised vision and mission serve to center the key principles for which we stand:

Mission: To equip, connect, and energize our members and partners for thoughtful action and greater impact.

Vision: We envision a thriving and equitable Missouri, served by a collaborative, purpose-driven, and effective philanthropic sector.

Welcome to Philanthropy Missouri! We're glad you're here.



PHILANTHROPY
MISSOURI
impact inspired.

GATEWAY CENTER *for* GIVING

HELPING DONORS DO MORE

#2 Oak Knoll Park • Suite 300 • St. Louis, MO 63105

www.centerforgiving.org • 314.621.6220

